

# The best learning assistants

**Exam** : **Alcatel-Lucent 4A0-102**

**Title** : Alcatel-Lucent Border Gateway  
Protocol

**Update** : Demo



1. Which of the following are Link State protocols?

- A. BGP
- B. RIP
- C. OSPF
- D. IS-IS

Answer: C, D

2. ECMP supports which of the following. Choose the best answer.

- A. 8 equal-cost paths per destination learned from any protocol
- B. 16 equal-cost paths per destination learned from any protocol
- C. 8 equal-cost paths per destination learned from the same protocol and preference
- D. 16 equal-cost paths per destination learned from the same protocol and preference
- E. 4 equal-cost paths per destination

Answer: D

3. Which of the following statements best describes the function of the RTM?

- A. From the router's route table, select the best routes to be installed in the FIB for forwarding data.
- B. Based on the metrics of the routing protocol, choose the lowest cost route to be installed in the route table.
- C. Apply the BGP route selection criteria to select the best route to be installed in the route table.
- D. Select the preferred route from the various routing protocols to be installed as the active route in the route table.
- E. Apply the assigned import and export policies to determine the routes to be advertised to the router's neighbors.

Answer: D

4. What items are carried in a typical classless routing update? Select the best answer.

- A. Network address, mask and metric
- B. Network address and metric
- C. Prefix and mask
- D. prefix, next-hop and metric
- E. prefix and next-hop

Answer: A

5. Choose the most accurate statement about the connections between eBGP peers.

- A. eBGP peers are usually directly connected to each other.
- B. eBGP peers are always directly connected to each other.

- C. eBGP peers are never directly connected to each other.
- D. eBGP peers are usually directly connected to each other, unless they are in the same autonomous system.
- E. eBGP peers are usually not directly connected to each other, additional configuration is required if they are.

Answer: A

6. What message is issued by a neighbor as a response to a valid Open?

- A. Keepalive
- B. Open
- C. Exchange
- D. Notification
- E. Ping

Answer: A

7. Which of the following is not exchanged in a BGP Open message?

- A. BGP version number
- B. The local AS number
- C. The hold time
- D. The keepalive timer
- E. The Router ID

Answer: D

8. The state of one BGP neighbor shows Established, which of the following is false?

- A. The router has established a complete session with that neighbor.
- B. BGP can exchange update, notification and keepalive messages with that neighbor
- C. If the keepalive timer expires, the local system sends a keepalive message and restarts its keepalive timer
- D. If the local system receives a notification message, it changes its state to OpenConfirm
- E. Established is the operational state

Answer: D

9. Which of the following is a Well Known Mandatory attribute?

- A. Origin Code
- B. Local Preference
- C. MED
- D. AS Path
- E. (a) and (d)
- F. (b) and (d)

Answer: E

10. Which of the following is true, based on the AS Path list shown here? 65206 65111 65100

- A. AS 65206 originated the route
- B. AS 65111 is a transit AS
- C. AS 65100 is a transit AS
- D. AS 65100 originated the route
- E. (b) and (d)
- F. (a) and (c)

Answer: E

11. True or False? Any BGP route selected as best by the route selection criteria will always be in the FIB as the active route.

- A. True
- B. False

Answer: B

12. If the state of one BGP neighbor shows Connect, which of the following is true?

- A. BGP is waiting for the TCP connection to be completed.
- B. BGP has established a TCP connection to that neighbor and is waiting for the BGP session to be established.
- C. The BGP session has never been initiated with that neighbor.
- D. There is an authentication problem with that neighbor.
- E. Connect is not a valid BGP state

Answer: A

13. Which statement best applies to BGP?

- A. It uses UDP as a transport to save on overhead.
- B. It uses IP and no transport protocol to save on overhead.
- C. It uses UDP as a transport since reliability is provided elsewhere.
- D. It uses TCP as a transport to utilize reliability provided by TCP
- E. Reliability of messaging in BGP is achieved by authenticating the session

Answer: D

14. How are BGP neighbors different from traditional IGP neighbors?

- A. They are not different, they are exactly the same
- B. BGP neighbors don't exchange routes, IGP neighbors do.
- C. IGP neighbors don't exchange routes, BGP neighbors do.
- D. BGP neighbors are always directly connected, IGP neighbors are not.
- E. IGP neighbors are always directly connected, BGP neighbors are not

Answer: E

15. The default TTL of a BGP control packet sent on an eBGP link is

- A. 1
- B. 16
- C. 32
- D. 64
- E. 128
- F. 255

Answer: A

16. By default, if the Alcatel 7750 SR receives an update with the local AS number already in the path it will:

- A. Reject the update
- B. Drop the peer
- C. Ignore the update
- D. (a) and (b)

Answer: C

17. Based on the following configuration, the source IP address used for this session will be:

```
config>router# autonomous-system 65200
config>router# bgp group "External BGP"
config>router>bgp>group$ description "AS 65250"
config>router>bgp>group$ peer-as 65250
config>router>bgp>group$ neighbor 56.0.59.2
```

- A. 56.0.59.2
- B. 56.0.59.3
- C. The system address of the local router
- D. The physical interface used to reach this neighbor
- E. Unknown
- F. Random

Answer: D

18. When does the Alcatel 7750 resolve the next-hop for a route?

- A. The next-hop is resolved when packets need to be forwarded
- B. There is no need to resolve the next hop, it is known from the routing update
- C. The next-hop is resolved prior to the route installation in the FIB in the fast path, in real time.
- D. The next-hop is periodically validated by a background process

Answer: C

19. For a BGP session to establish between the local router and 192.168.1.1, which of the following

is true, based on the following configuration?

```
config>router>bgp# group "BGP Peers"
```

```
config>router>bgp>group# authentication-key "Group"
```

```
config>router>bgp>group# neighbor 192.168.1.1
```

```
config>router>bgp>group>neighbor# authentication-key "Neighbor"
```

- A. The local router will use the authentication key "Group" for all peering sessions.
- B. The local router will use both authentication keys for extra security when communicating with neighbor 192.168.1.1 since both are defined
- C. The configuration of neighbor 192.168.1.1 will require the authentication key "Group" since the group "BGP Peers" is defined with that key
- D. The configuration of neighbor 192.168.1.1 will require the authentication key "Neighbor" since the neighbor is defined with that key
- E. All of the above statements are false

Answer: D

20. Refer to the following configuration, which has been applied to BGP as an export policy.

```
entry 10
```

```
from
```

```
protocol direct
```

```
prefix-list "SomeNets"
```

```
exit
```

```
action accept
```

```
origin incomplete
```

```
exit
```

```
exit
```

```
entry 20
```

```
from
```

```
protocol ospf
```

```
prefix-list "SomeNets"
```

```
exit action accept origin igp metric set 1700 exit
```

exit Select the best statement below.

- A. This configuration is invalid since the same prefix-list is referenced twice
- B. This configuration will allow all BGP routes, and direct and ospf routes that match the prefixlist. Direct and ospf routes will be marked in BGP with an origin of igp
- C. This configuration is invalid since incomplete is not a valid origin code
- D. This configuration would not allow any BGP routes to be propagated since there is no defaultaction
- E. This configuration will allow all BGP routes, and direct and ospf routes that match the prefixlist

Answer: E

21. Choose the best statement from the list below, based on the following configuration:

```
prefix-list "intoBGP"  
prefix 192.168.4.0/28 longer  
description "Sample Policy"  
entry 10  
from  
protocol ospf  
prefix-list "intoBGP"  
exit  
action accept  
origin igp  
exit  
exit  
default-action reject
```

- A. OSPF routes of network 192.168.4.0 will have their origin code changed to IGP
- B. OSPF routes of network 192.168.4.0 or longer will have their origin code changed to IGP
- C. OSPF routes of network 192.168.4.0 with a mask of 28 bits will have their origin code changed to IGP
- D. OSPF routes of network 192.168.4.0 with a mask of 28 bits or more will have their origin code changed to IGP
- E. OSPF routes of network 192.168.4.0 with a mask of 28 bits or more will be accepted and have their origin code changed to IGP

Answer: E

22. Which of the following statements is true, based on the configuration below? aggregate 192.168.0.0/19 summary-only

- A. Address 192.168.0.0 255.255.224.0 will only be advertised
- B. Address 192.168.0.0 255.255.240.0 will only be advertised
- C. Address 192.168.0.0 255.255.248.0 will only be advertised
- D. Address 192.168.0.0 255.255.224.0 and more specific networks will be advertised
- E. Address 192.168.0.0 255.255.240.0 and more specific networks will be advertised
- F. Address 192.168.0.0 255.255.248.0 and more specific networks will be advertised

Answer: A

23. Which of the following configuration commands would correctly configure the local Autonomous System number?

- A. config>router# autonomous-system 65200
- B. config>router>bgp# autonomous-system 65200
- C. config>router# bgp autonomous-system 65200

D. config>router>bgp# local-as 65200

Answer: A

24. The AS's that comprise a Confederation are referred to by what name?

- A. Partner
- B. Subordinate
- C. Member
- D. Provincial
- E. Federal

Answer: C

25. What is the function of the Cluster\_List attribute?

- A. It is used for loop detection within the same cluster
- B. It is used for loop detection between multiple clusters
- C. It is used for loop detection in a Confederation.
- D. It is not used for loop detection

Answer: B

26. Originator\_ID is what class of attribute?

- A. Well Known Mandatory
- B. Well Known Discretionary
- C. Optional Transitive
- D. Optional Non-transitive

Answer: D

27. Which of the following statements is true?

- A. AS Path is unmodified by default in eBGP
- B. Next-hop is unmodified by default in eBGP
- C. Local Preference is unmodified by default in eBGP
- D. Origin Code is unmodified by default in eBGP
- E. BGP control packet TTL is 255 by default in eBGP
- F. All of the above statements are false

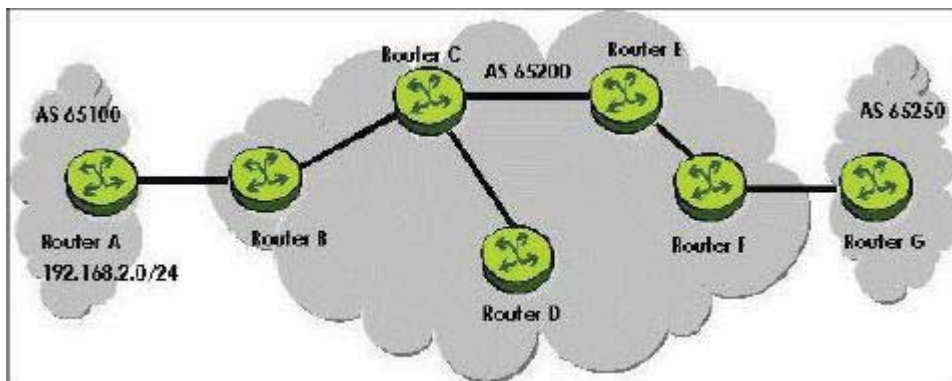
Answer: D

28. Why is it not recommended to configure a transit AS with BGP only on the edge routers?

- A. The volume of BGP routes would exceed the IGP capacity
- B. The policies become complex
- C. BGP attributes are lost when transported by the IGP
- D. All of the above

Answer: D

29. Exhibit



If Router C and Router E are Route Reflectors, when the update for prefix 192.168.2.0/24 is received at Router G, what will be set for the Cluster\_List attribute?

- A. The Cluster\_ID of Router B
- B. The Cluster\_ID of Router C
- C. The Cluster\_ID of Router E
- D. The Cluster\_ID of Routers C and E.
- E. The Cluster\_ID of Router B, C, E and F
- F. It will not be set

Answer: F

ExamSavior.com was founded in 2006. The safer,easier way to help you pass any IT Certification exams . We provide high quality IT Certification exams practice questions and answers(Q&A). Especially [Adobe](#), [Apple](#), [Citrix](#), [Comptia](#), [EMC](#), [HP](#), [HuaWei](#), [LPI](#), [Nortel](#), [Oracle](#), [SUN](#), [Vmware](#) and so on. And help you pass any IT Certification exams at the first try.

You can reach us at any of the email addresses listed below.

English Customer:

Sales : [sales@examsavior.com](mailto:sales@examsavior.com)

Support: [support@examsavior.com](mailto:support@examsavior.com)

Website: [www.examavior.com](http://www.examavior.com)

