

# The best learning assistants

**Exam** : **Alcatel-Lucent 4A0-105**

**Title** : Alcatel-Lucent Virtual Private LAN  
Services

**Update** : Demo



1. Which of the following best describes the difference between VPWS and VPLS?

- A. VPWS is a point-to-point service where CEs are presented with point-to-point virtual circuits whereas VPLS is a bridged LAN service provided to a set of CEs that are members of a L2 VPN
- B. Unlike VPLS, VPWS allows CEs that are member of the same service instance to communicate with each other as if they are connected via a bridged LAN
- C. Unlike VPWS, VPLS provides customers to view the network as an unshared overlay link or circuit

Answer: A

2. The behavior of VPLS can be best described by which of the following statements?

- A. A frame should be sent only to the PE that connects to the target site of the frame whenever possible
- B. A frame should be flooded as little as possible
- C. Customer frames should be switched based on the destination MAC address
- D. Only (a) and (b) are true
- E. All of the above

Answer: E

3. Which of the following statements relating to VPLS are false?

- A. A VPLS is a multipoint Layer 2 service
- B. A VPLS allows multiple customer sites to be connected in a single bridged domain
- C. A VPLS on a single node requires a Service Distribution Path
- D. With VPLS Service provider can reuse their IP/MPLS infrastructure to offer multiple services
- E. The VPLS switches traffic based on MAC address associated to the appropriate SAP

Answer: C

4. True or False? Multiple VPLS services can be offered over the same set of LSP tunnels?

- A. True
- B. False

Answer: A

5. Which of the following contributes to VPLS implementation over MPLS?

- A. Connecting bridging-capable provider edge routers with a full mesh of MPLS LSP (label switched path) tunnels
- B. Negotiating per-service VC labels using draft-Martini encapsulation
- C. Replicating unknown and broadcast traffic in a service domain
- D. Enabling MAC learning over tunnel and access ports
- E. Using a separate forwarding information base (FIB) per VPLS service
- F. All of the above

Answer: F

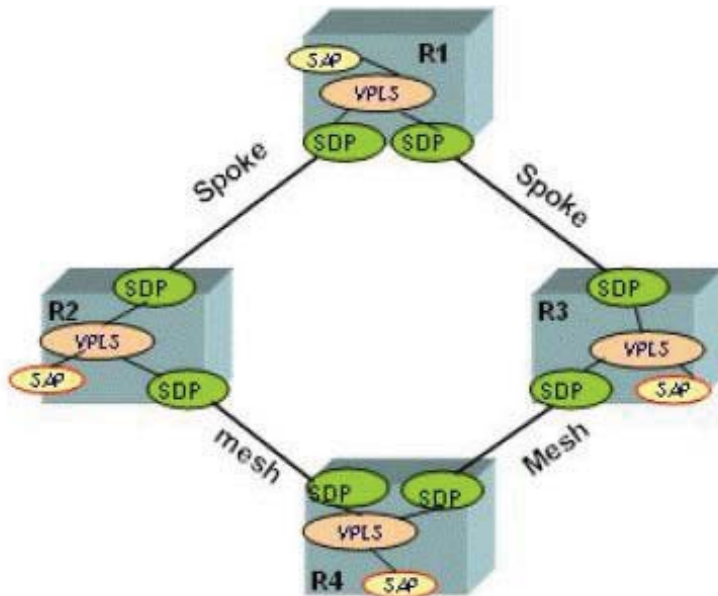
6. Which of the following statements is false?

- A. VPLS is a bridged LAN service
- B. VPLS provides L2 VPN services to CEs
- C. VPLS is a point-to-point service where CEs are presented with point-to-point virtual circuits

D.CEs that are members of the same VPLS service instance communicate with each other as if they are connected via a bridged LAN

Answer: C

7.Which SDP on R3 will MAC addresses be associated with for devices behind R2?



- A.It depends if traffic is received via R4 or R1 from devices behind R2
- B.The devices cannot communicate based on the configuration in the diagram so there will be no mac address association
- C.Devices behind R2 will be associated with the sdp between R3 and R1
- D.Devices behind R2 will be associated with the sdp between R3 and R4

Answer: C

8.Which of the following functions must a PE router support when participating in a VPLS network?

Choose all that apply.

- A.MAC learning
- B.Packet replication
- C.Proxy ARP
- D.Packet forwarding
- E.Flood all frames with an unknown destination MAC address to all PE routers associated with that VPLS

Answer: A B D E

9.Select the command from the list below that produced the following output.

Err Info	Local	Remote
-----		
Type:	VPLS	VPLS
Admin State:	Up	Up
Oper State:	Up	Up
Service-MTU:	1514	1514
Customer ID:	10	10
IP Interface State:	Up	
Actual IP Addr:	10.10.10.10	20.20.20.20
Expected Peer IP:	20.20.20.20	10.10.10.10
SDP Path Used:	Yes	Yes
SDP-ID:	10	10
Admin State:	Up	Up
Operative State:	Up	Up
Binding Admin State:	Up	Up
Binding Oper State:	Up	Up
Binding VC ID:	10	10
Binding Type:	Mesh	Mesh
Binding Vc-type:	Ether	Ether
Binding Vlan-vc-tag:	N/A	N/A
Egress Label:	131068	131070
Ingress Label:	131070	131068
Egress Label Type:	Signaled	Signaled
Ingress Label Type:	Signaled	Signaled

- A.oam svc-ping 20.20.20.20 service 10 local-sdp remote-sdp
- B.oam sdp-ping 10 resp-sdp 10
- C.oam svc-ping 20.20.20.20 service 10 local-sdp
- D.oam svc-ping 10.10.10.10 service 10 local-sdp remote-sdp
- E.oam svc-ping 10.10.10.10 service 10 local-sdp

Answer: A

10. Based on the following output what will the vc-id be of any mesh-sdp bound to this service?

```
A:PE-Z>config>service# show service id 9000 base

=====
Service Basic Information
=====
Service Id       : 9000                Vpn Id           : 0
Service Type    : VPLS
Customer Id     : 100
Last Status Change: 02/12/2007 13:17:11
Last Mgmt Change  : 02/12/2007 13:17:11
Admin State     : Up                  Oper State       : Up
MTU             : 1514                Def. Mesh VC Id  : 1000
SAP Count       : 0                  SDP Bind Count   : 1
Send Flush on Fail: Disabled

=====
Service Access & Destination Points
=====
Identifier                Type          AdmMTU  OprMTU  Adm   Opr
=====
```

- A.9000
  - B.1514
  - C.1000
  - D.0
- Answer: C

ExamSavior.com was founded in 2006. The safer,easier way to help you pass any IT Certification exams . We provide high quality IT Certification exams practice questions and answers(Q&A). Especially [Adobe](#), [Apple](#), [Citrix](#), [Comptia](#), [EMC](#), [HP](#), [HuaWei](#), [LPI](#), [Nortel](#), [Oracle](#), [SUN](#), [Vmware](#) and so on. And help you pass any IT Certification exams at the first try.

You can reach us at any of the email addresses listed below.

English Customer:

Sales : [sales@examsavior.com](mailto:sales@examsavior.com)

Support: [support@examsavior.com](mailto:support@examsavior.com)

Website: [www.examavior.com](http://www.examavior.com)

