

The best learning assistants

Exam : **Alcatel-Lucent 4A0-110**

Title : Alcatel-Lucent Advanced
Troubleshooting

Update : Demo



1. Two routers are physically connected to each other over Ethernet port 1/1/1. Review the configuration information shown below. What state should the OSPF neighbor be in?

Node 1

```
config> port 1/1/1
    ethernet
        mtu 1514
    exit
    no shutdown
    router interface toNode2
        address 10.1.5.1/24
        port 1/1/1
    router ospf
        area 0.0.0.0
            interface "toNode2"
                mtu 1500
```

Node 2

```
config> port 1/1/1
    no shutdown
    router interface toNode1
        address 10.1.5.2/24
        port 1/1/1
    router ospf
        area 0.0.0.0
            interface "toNode1"
                mtu 1500
```

- A. INIT
- B. EXCHANGE
- C. EXSTART
- D. FULL
- E. No OSPF neighbor

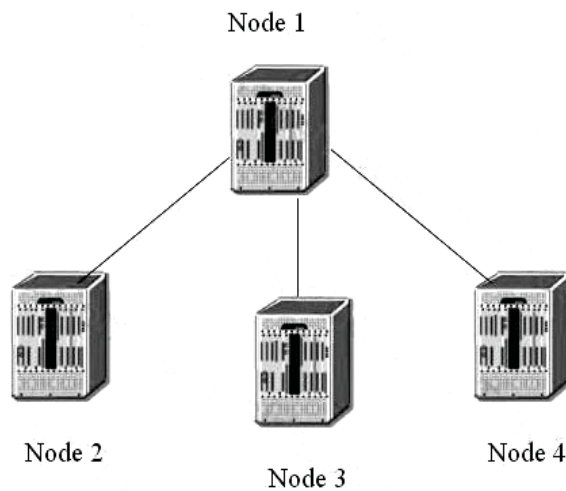
Answer: E

2. Which of the following debug statements can be used to troubleshoot if the OSPF adjacency is staying at xstart state? Select two answers.

- A. debug router ospf rtm
- B. debug router ospf packet dbdescr
- C. debug router ospf neighbor
- D. debug router ospf packet hello
- E. debug router ospf spf

Answer: BC

3. Based on the following configuration, which of the following statements are true? Choose all that apply.



Node-1

```

config>router>ospf#
area 0.0.0.0
  interface "to-Node-2"
    metric 50
    authentication-key "DoGpEhE4333mNp52Iug6Z82" hash2
  interface "to-Node-3"
    metric 50
area 0.0.0.1
  nssa
  originate-default-route
  interface "to-Node-4"
    metric 50
  
```

Node-2

```

config>router>ospf#
area 0.0.0.0
  interface "to-Node-1"
    authentication-key "Sb77iS4bPCeH2Arm5iaFuHaxNbn1g82" hash2
  
```

Node-3

```

config>router>ospf#
area 0.0.0.0
  interface "to-Node-1"
    hello-interval 15
  
```

Node-4

```

config>router>ospf#
area 0.0.0.1
  interface "to-Node-1"
    metric 50
  
```

- A. No OPSF adjacency found on Node 1
- B. Full OSPF adjacency between Node-1 and Node-2
- C. Full OSPF adjacency between Node-1 and Node-3
- D. Full OSPF adjacency between Node-1 and Node-4
- E. OSPF is enabled on Node 1

Answer: BE

4. Two routers are physically connected to each other over Ethernet port 1/1/1. Review the configuration information below. What state should the OSPF neighbor be in?

Node 1

```
config> port 1/1/1
    ethernet
    mtu 1514
    exit
    no shutdown
router interface toNode2
    address 10.1.5.1/24
    port 1/1/1
router ospf
    area 0.0.0.0
    interface "toNode2"
    mtu 1500
```

Node 2

```
config> port 1/1/1
    no shutdown
router interface toNode1
    address 10.1.5.2/24
    port 1/1/1
router ospf
    area 0.0.0.0
    interface "toNode1"
    mtu 1500
```

- A. INIT
- B. EXCHANGE
- C. EXSTART
- D. FULL
- E. No OSPF neighbor

Answer: D

5. Two routers are physically connected running ISIS. ISIS L2 adjacency is up and running but L1 adjacency is not up. Review the configuration information shown below:

Which of the following statement best describe the cause of the problem? Select one answer only.

Pod-1

```

config>router>
  isis
  interface "toPod2"
  exit

# show router isis interface detail
=====
ISIS Interfaces
=====
-----
Interface      : toPod2                      Level Capability: L1L2
Oper State     : Up                        Admin State      : Up
Auth Type      : None
Circuit Id     : 2                          Retransmit Int. : 5
Type           : Broadcast                  LSP Pacing Int. : 100
Mesh Group     : Inactive                   CSNP Int.       : 10
Bfd Enabled    : No

Level          : 1                          Adjacencies     : 0
Desg. IS      : Pod1                        Metric          : 10
Auth Type     : None                        Hello Mult.     : 3
Hello Timer   : 9                           Passive         : No
Priority      : 64

Level          : 2                          Adjacencies     : 1
Desg. IS      : Pod1                        Metric          : 10
Auth Type     : None                        Hello Mult.     : 3
Hello Timer   : 9                           Passive         : No
Priority      : 64
  
```

Pod-2

```

config>router>
  isis
  interface "toPod1"
  exit

# show router isis interface detail
=====
ISIS Interfaces
=====
-----
Interface      : toPod1                      Level Capability: L1L2
Oper State     : Up                        Admin State      : Up
Auth Type      : None
Circuit Id     : 3                          Retransmit Int. : 5
Type           : Broadcast                  LSP Pacing Int. : 100
Mesh Group     : Inactive                   CSNP Int.       : 10
Bfd Enabled    : No

Level          : 1                          Adjacencies     : 0
Desg. IS      : Pod2                        Metric          : 10
Auth Type     : None                        Hello Mult.     : 3
Hello Timer   : 9                           Passive         : No
Priority      : 64

Level          : 2                          Adjacencies     : 1
Desg. IS      : Pod1                        Metric          : 10
Auth Type     : None                        Hello Mult.     : 3
Hello Timer   : 9                           Passive         : No
Priority      : 64
  
```

- A. The ISIS interface level is not configured on both routers
- B. The ISIS interface type should be configured as point-to-point interfaces
- C. ISIS System IDs are not configured on both routers
- D. ISIS Area addresses are not configured on both routers
- E. ISIS level capacity are not configured on both routers

Answer: D

ExamSavior.com was founded in 2006. The safer,easier way to help you pass any IT Certification exams . We provide high quality IT Certification exams practice questions and answers(Q&A). Especially [Adobe](#), [Apple](#), [Citrix](#), [Comptia](#), [EMC](#), [HP](#), [HuaWei](#), [LPI](#), [Nortel](#), [Oracle](#), [SUN](#), [Vmware](#) and so on. And help you pass any IT Certification exams at the first try.

You can reach us at any of the email addresses listed below.

English Customer:

Sales : sales@examsavior.com

Support: support@examsavior.com

Website: www.examavior.com

