

The best learning assistants

Exam : Cisco 640-802

**Title : Cisco Certified Network
Associate**

Update : DEMO



1. Refer to the exhibit. What could be possible causes for the "Serial0/0 is down" interface status? (Choose two.)

```
Router1#show interfaces serial 0/0
```

```
Serial0/0 is down, line protocol is down  
Hardware is MK5025  
Serial Internet address is 10.1.1.2/24  
MTU 1500 bytes, BW 1544 Kbits, DLY 20000 usec, rely 255/255, load 9/255  
Encapsulation PPP, loopback not set, keepalive set (10 sec)  
<some output omitted>
```

- A. A Layer 1 problem exists.
- B. The bandwidth is set too low.
- C. A protocol mismatch exists.
- D. An incorrect cable is being used.
- E. There is an incorrect IP address on the Serial 0/0 interface.

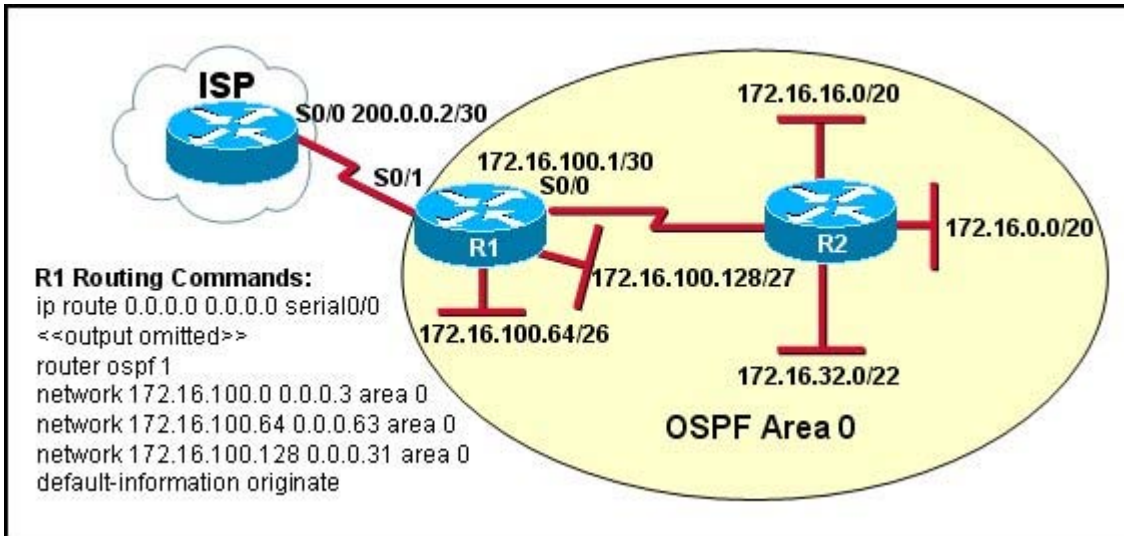
Answer: AD

2. The network administrator has discovered that the power supply has failed on a switch in the company LAN and that the switch has stopped functioning. It has been replaced with a Cisco Catalyst 2950 series switch. What must be done to ensure that this new switch becomes the root bridge on the network?

- A. Lower the bridge priority number.
- B. Change the MAC address of the switch.
- C. Increase the VTP revision number for the domain.
- D. Lower the root path cost on the switch ports.
- E. Assign the switch an IP address with the lowest value.

Answer: A

3. Refer to the exhibit. Assume that all of the router interfaces are operational and configured correctly. How will router R2 be affected by the configuration of R1 that is shown in the exhibit?



- A. Router R2 will not form a neighbor relationship with R1.
- B. Router R2 will obtain a full routing table, including a default route, from R1.
- C. R2 will obtain OSPF updates from R1, but will not obtain a default route from R1.
- D. R2 will not have a route for the directly connected serial network, but all other directly connected networks will be present, as well as the two Ethernet networks connected to R1.

Answer: A

4. Before installing a new, upgraded version of the IOS, what should be checked on the router, and which command should be used to gather this information? (Choose two.)

- A. the amount of available ROM
- B. the amount of available flash and RAM memory
- C. the version of the bootstrap software present on the router
- D. show version
- E. show processes
- F. show running-config

Answer: BD

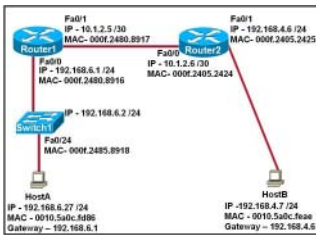
5. Which three IP addresses can be assigned to hosts if the subnet mask is /27 and subnet zero is usable? (Choose three.)

- A. 10.15.32.17
- B. 17.15.66.128
- C. 66.55.128.1

- D. 135.1.64.34
- E. 129.33.192.192
- F. 192.168.5.63

Answer: ACD

6. Refer to the exhibit. After HostA pings HostB, which entry will be in the ARP cache of HostA to support this transmission?



A.

Interface	Address	Physical Address	Type
	192.168.4.7	000f.2480.8916	dynamic

B.

Interface	Address	Physical Address	Type
	192.168.4.7	0010.5a0c.feae	dynamic

C.

Interface	Address	Physical Address	Type
	192.168.6.2	0010.5a0c.feae	dynamic

D.

Interface	Address	Physical Address	Type
	192.168.6.1	000f.2480.8916	dynamic

E.

Interface	Address	Physical Address	Type
	192.168.6.1	0010.5a0c.feae	dynamic

F.

Interface	Address	Physical Address	Type
	192.168.6.2	000f.2485.8918	dynamic

Answer: D

7. Refer to the exhibit. A packet with a source IP address of 192.168.2.4 and a destination IP address of 10.1.1.4 arrives at the HokesB router. What action does the router take?

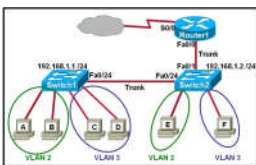
```

Hokeu5# show ip route
< output omitted >
Gateway of last resort is not set
192.168.2.0/24 is subnetted, 6 subnets
D 192.168.2.64 [0/205145600] via 192.168.0.8, 01:22:10, Serial0/1
D 192.168.2.80 [0/205145600] via 192.168.0.8, 01:22:10, Serial0/1
D 192.168.2.32 [0/205145600] via 192.168.9.2, 01:22:10, Serial0/0
D 192.168.2.48 [0/205145600] via 192.168.9.2, 01:22:10, Serial0/0
D 192.168.2.0 [0/20720] via 192.168.1.10, 01:22:10, FastEthernet0/0
D 192.168.0.8 [0/1561920] via 192.168.1.10, 01:22:11, FastEthernet0/0
192.168.0.30 is subnetted, 1 subnets
C 192.168.0.0 is directly connected, Serial0/0
192.168.0.30 is subnetted, 1 subnets
C 192.168.0.4 is directly connected, Serial0/1
192.168.1.0/30 is subnetted, 1 subnets
C 192.168.1.8 is directly connected, FastEthernet0/0
Hokeu5#
    
```

- A. forwards the received packet out the Serial0/0 interface
- B. forwards a packet containing an EIGRP advertisement out the Serial0/1 interface
- C. forwards a packet containing an ICMP message out the FastEthernet0/0 interface
- D. forwards a packet containing an ARP request out the FastEthernet0/1 interface

Answer: C

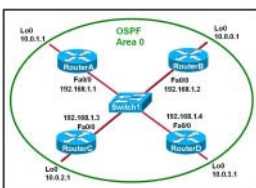
8. Refer to the exhibit. Which two statements are true about interVLAN routing in the topology that is shown in the exhibit? (Choose two.)



- A. Host E and host F use the same IP gateway address.
- B. Router1 and Switch2 should be connected via a crossover cable.
- C. Router1 will not play a role in communications between host A and host D.
- D. The FastEthernet 0/0 interface on Router1 must be configured with subinterfaces.
- E. Router1 needs more LAN interfaces to accommodate the VLANs that are shown in the exhibit.
- F. The FastEthernet 0/0 interface on Router1 and Switch2 trunk ports must be configured using the same encapsulation type.

Answer: DF

9. Refer to the exhibit. Which two statements are true about the loopback address that is configured on RouterB? (Choose two.)



- A. It ensures that data will be forwarded by RouterB.
- B. It provides stability for the OSPF process on RouterB.

- C. It specifies that the router ID for RouterB should be 10.0.0.1.
- D. It decreases the metric for routes that are advertised from RouterB.
- E. It indicates that RouterB should be elected the DR for the LAN.

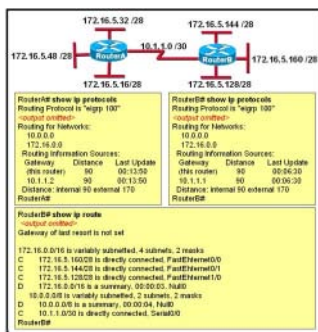
Answer: BC

10. A network administrator is explaining VTP configuration to a new technician. What should the network administrator tell the new technician about VTP configuration? (Choose three.)

- A. A switch in the VTP client mode cannot update its local VLAN database.
- B. A trunk link must be configured between the switches to forward VTP updates.
- C. A switch in the VTP server mode can update a switch in the VTP transparent mode.
- D. A switch in the VTP transparent mode will forward updates that it receives to other switches.
- E. A switch in the VTP server mode only updates switches in the VTP client mode that have a higher VTP revision number.
- F. A switch in the VTP server mode will update switches in the VTP client mode regardless of the configured VTP domain membership.

Answer: ABD

11. Refer to the exhibit. From RouterA, a network administrator is able to ping the serial interface of RouterB but unable to ping any of the subnets attached to RouterB. Based on the partial outputs in the exhibit, what could be the problem?



- A. EIGRP does not support VLSM.
- B. The EIGRP network statements are incorrectly configured.
- C. The IP addressing on the serial interface of RouterA is incorrect.
- D. The routing protocol has summarized on the classful boundary.
- E. EIGRP has been configured with an invalid autonomous system number.

Answer: D

12. Which two locations can be configured as a source for the IOS image in the boot system command?

(Choose two.)

- A. RAM
- B. NVRAM
- C. flash memory
- D. HTTP server
- E. TFTP server
- F. Telnet server

Answer: CE

13. What are two reasons a network administrator would use CDP? (Choose two.)

- A. to verify the type of cable interconnecting two devices
- B. to determine the status of network services on a remote device
- C. to obtain VLAN information from directly connected switches
- D. to verify Layer 2 connectivity between two devices when Layer 3 fails
- E. to obtain the IP address of a connected device in order to telnet to the device
- F. to determine the status of the routing protocols between directly connected routers

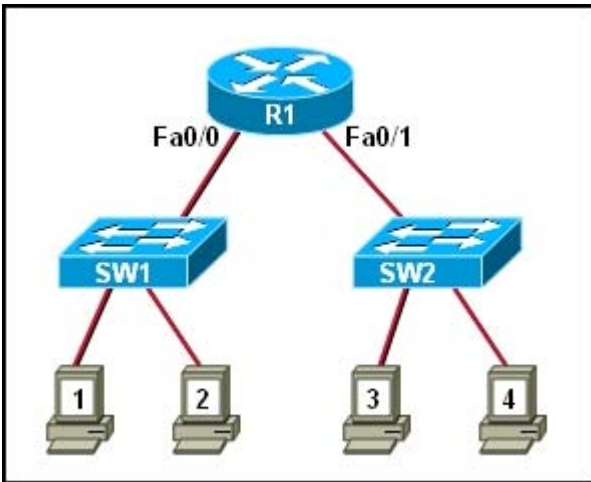
Answer: DE

14. What are three characteristics of the OSPF routing protocol? (Choose three.)

- A. It converges quickly.
- B. OSPF is a classful routing protocol.
- C. It uses cost to determine the best route.
- D. It uses the DUAL algorithm to determine the best route.
- E. OSPF routers send the complete routing table to all directly attached routers.
- F. OSPF routers discover neighbors before exchanging routing information.

Answer: ACF

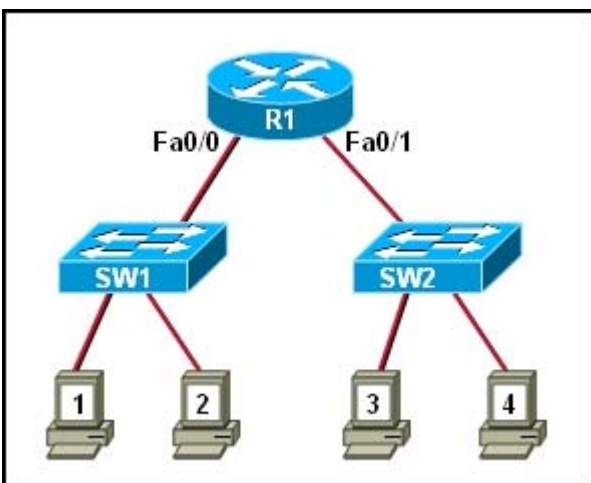
15. Refer to the exhibit. Both switches are using a default configuration. Which two destination addresses will host 4 use to send data to host 1? (Choose two.)



- A. the IP address of host 1
- B. the IP address of host 4
- C. the MAC address of host 1
- D. the MAC address of host 4
- E. the MAC address of the Fa0/0 interface of the R1 router
- F. the MAC address of the Fa0/1 interface of the R1 router

Answer: AF

16. Refer to the exhibit. SW1 and SW2 have default configurations. What will happen if host 1 sends a broadcast?



- A. Hosts 2, 3, and 4 will receive the broadcast.
- B. Hosts 1, 2, 3, and 4 will receive the broadcast.

- C. Host 2 and the Fa0/0 interface of R1 will receive the broadcast.
- D. Hosts 1, 2 and the Fa0/0 interface of R1 will receive the broadcast.
- E. Hosts 1, 2, 3, 4 and interface Fa0/0 of R1 will receive the broadcast.
- F. Hosts 2, 3, 4, and interfaces Fa0/0 and Fa0/1 of R1 will receive the broadcast.

Answer: C

17. A router has learned three possible routes that could be used to reach a destination network. One route is from EIGRP and has a composite metric of 20514560. Another route is from OSPF with a metric of 782. The last is from RIPv2 and has a metric of 4. Which route or routes will the router install in the routing table?

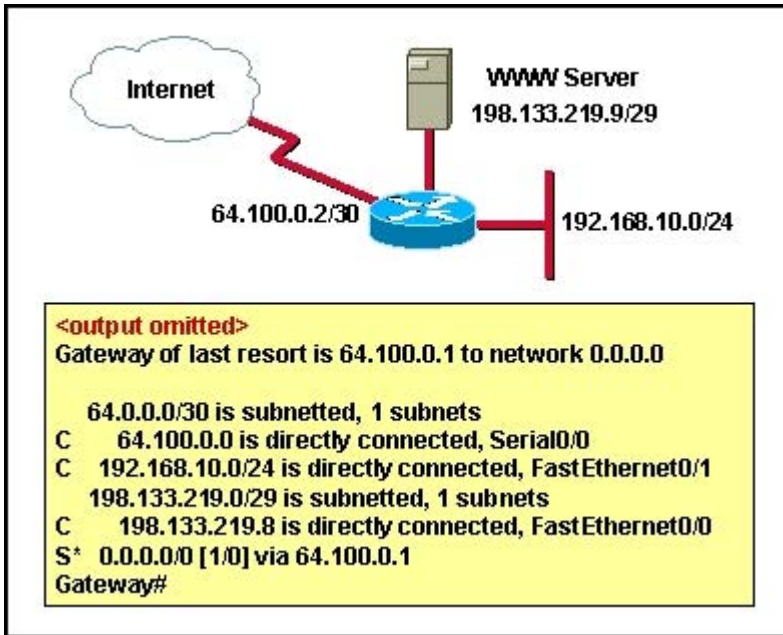
- A. the OSPF route
- B. the EIGRP route
- C. the RIPv2 route
- D. all three routes
- E. the OSPF and RIPv2 routes

Answer: B

18. Refer to the exhibit. The router has been configured with these commands:

```
hostname Gateway
interface FastEthernet 0/0
  ip address 198.133.219.14 255.255.255.248
  no shutdown
interface FastEthernet 0/1
  ip address 192.168.10.254 255.255.255.0
  no shutdown
interface Serial 0/0
  ip address 64.100.0.2 255.255.255.252
  no shutdown
ip route 0.0.0.0 0.0.0.0 64.100.0.1
```

What are the two results of this configuration? (Choose two.)



- A. The default route should have a next hop address of 64.100.0.3.
- B. Hosts on the LAN that is connected to FastEthernet 0/1 are using public IP addressing.
- C. The address of the subnet segment with the WWW server will support seven more servers.
- D. The addressing scheme allows users on the Internet to access the WWW server.
- E. Hosts on the LAN that is connected to FastEthernet 0/1 will not be able to access the Internet without address translation.

Answer: DE

19. A company is installing IP phones. The phones and office computers connect to the same device. To ensure maximum throughput for the phone data, the company needs to make sure that the phone traffic is on a different network from that of the office computer data traffic. What is the best network device to which to directly connect the phones and computers, and what technology should be implemented on this device?

(Choose two.)

- A. hub
- B. router
- C. switch
- D. STP
- E. subinterfaces
- F. VLAN

Answer: CF

20. For what two purposes does the Ethernet protocol use physical addresses? (Choose two.)

- A. to uniquely identify devices at Layer 2
- B. to allow communication with devices on a different network
- C. to differentiate a Layer 2 frame from a Layer 3 packet
- D. to establish a priority system to determine which device gets to transmit first
- E. to allow communication between different devices on the same network
- F. to allow detection of a remote device when its physical address is unknown

Answer: AE

ExamSavior.com was founded in 2006. The safer,easier way to help you pass any IT Certification exams . We provide high quality IT Certification exams practice questions and answers(Q&A). Especially [Adobe](#), [Apple](#), [Citrix](#), [Comptia](#), [EMC](#), [HP](#), [HuaWei](#), [LPI](#), [Nortel](#), [Oracle](#), [SUN](#), [Vmware](#) and so on. And help you pass any IT Certification exams at the first try.

You can reach us at any of the email addresses listed below.

English Customer:

Sales : sales@examsavior.com

Support: support@examsavior.com

Website: www.examavior.com

