

The best learning assistants

Exam : **APPLE 9L0-402**

Title : Mac OS X Support Essentials
v10.4 Exam

Update : Demo



1. Which of these can you use to determine whether there is network connectivity between your computer and a web server on the Internet?

- A. Whois
- B. Finger
- C. Lookup
- D. Traceroute

Answer: D

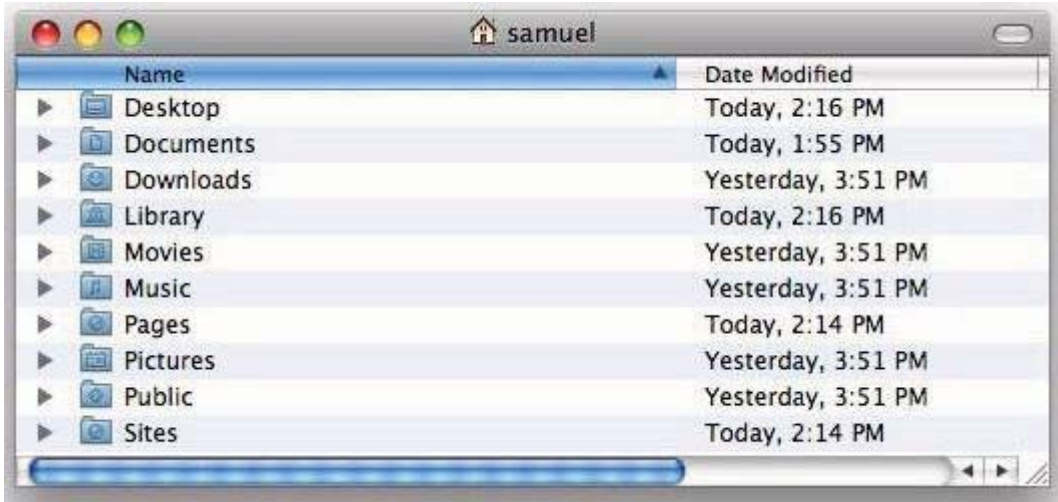
2. You are an admin user, and have enabled the Ignore Volume Ownership option for an external FireWire hard disk. What will happen the next time a standard user attempts to mount the disk?

- A. The disk will mount, and the user will be able to read, modify, and delete any file on the disk.
- B. The disk will mount, and the user will be able to read any file on the disk; the user will be required to enter an administrator password to modify or delete files on the disk.
- C. The user will be required to enter an administrator password to mount the disk; once the disk is mounted the user will be able to read, modify, and delete any file on the disk.
- D. The user will be required to enter an administrator password to mount the disk; once the disk is mounted, the user will be able to read any file on the disk, but will be required to re-enter an administrator password to modify or delete files.

Answer: A

3. Review the screenshot of a user's home folder, and then answer the question below.

Which folder did the user create?



- A. Music
- B. Pages
- C. Pictures
- D. Downloads

Answer: B

4. Mac OS X v10.5 can read files on a volume that is _____-formatted, but it cannot write to files on the volume.

- A. UFS
- B. NTFS
- C. EXT2
- D. FAT32

Answer: B

5. Which procedure will let someone who does not have a local user account log in to a local admin user account on a Mac OS X v10.5 computer that does NOT have a firmware password enabled?

- A. Log in to the computer with the user name "root" and the master password, open Accounts preferences, and reset the admin user password.
- B. Remove a RAM DIMM from one of the computers RAM slots, restart the computer while holding down the Command-Option-O-F keys until you hear the startup sound, then type "reset-all" at the prompt.

C. Start the computer from the internal hard disk, log into a guest user account, open the Reset Password utility in the /Applications/Utilities folder, then reset the password on the admin user account that resides on the hard disk volume.

D. Press the C key while restarting the computer with the Mac OS X v10.5 Install DVD inserted, then choose Reset Password from the Utilities menu. Select the hard disk volume and the admin user account, then enter a new password for the account and click Save.

Answer: D

6. You have configured your Mac OS X v10.5 computer to share its connected USB printer. Mac OS X users can locate and print to it, but Windows users can not. What additional step must you take to allow Windows users to print to it?

A. In Sharing preferences, enable file sharing over SMB.

B. In Print & Fax preferences, enable the SMB printer driver.

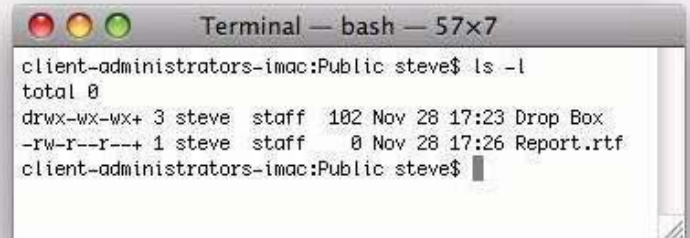
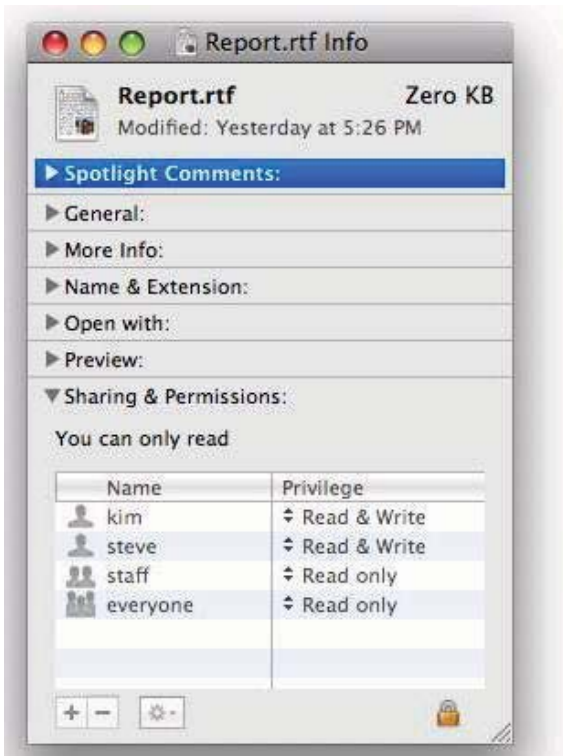
C. In Printer Setup Utility, enable Windows Printing from the Printers menu.

D. In Print & Fax preferences, configure the Windows Printer name and queue.

Answer: A

7. Review the screenshots of a files permissions, as seen in Finder and from Terminal, and then answer the question below.

Why are Kim's permissions to the file, Report.rtf, NOT visible in the Terminal listing?



- A. Kims permissions are stored as POSIX settings.
- B. Kims permissions are stored in the volume catalog.
- C. Kims permissions are stored in the file data segment.
- D. Kims permissions are stored in an Access Control List (ACL).

Answer: D

8. Tom wants to share a document with Harriet. Both have standard user accounts on the same Mac OS X v10.5 computer. Which of these is NOT a location where Tom can store the document so that Harriet can read it?

- A. /Users/Shared/
- B. /Users/tom/Public/
- C. /Users/harriet/Public/
- D. /Users/harriet/Public/Drop Box/

Answer: C

9. The primary role of the master password in Mac OS X v10.5 is to let you _____.

- A. access all the passwords stored in a local keychain
- B. reset the password of an account that has FileVault enabled
- C. change the startup device by holding down the Option key while the computer starts up
- D. connect to any password-protected web server whose password is stored in a local keychain

Answer: B

10. Which statement identifies a potential effect of resetting the master password for a Mac OS X v10.5 computer?

- A. Users with keychain files created before you changed the master password must use the old master password to unlock their keychains.
- B. Users who enabled FileVault before you changed the master password will not be able to access their home folder if they have forgotten their account password.
- C. Users with keychain files created before you changed the master password will have their keychain passwords automatically updated to match the new master password.
- D. Users whose accounts were created before you changed the master password must use the firmware password to access their home folder if they have forgotten their account password.

Answer: B

11. Review the screenshot of the About This Mac window, and then answer the question below.

You want to find the System Software Build number of the copy of Mac OS X v10.5 running on a computer.

Where should you click in the About This Mac window, shown above, to find the answer without opening another application?



- A. Apple logo icon
- B. Mac OS X
- C. Version 10.5
- D. More Info button

Answer: C

12. In what order does Mac OS X v10.5 search the folders in the local file system for resources such as fonts?

- A. ~/Library, /Library, /System/Library
- B. /Library, ~/Library, /System/Library
- C. /System/Library, ~/Library, /Library
- D. /Library, /System/Library, ~/Library

Answer: A

13. Which information must you know about a corporate VPN server before configuring the VPN software on a users computer to access the corporate network?

- A. If the corporate VPN server supports PPPoE
- B. If the corporate VPN server supports DNSsec
- C. If the corporate VPN server supports L2TP or PPTP
- D. Which network protocols will be encrypted by the corporate VPN

Answer: C

14. What are TWO reasons a system administrator might choose to store user accounts on a directory server?(Choose TWO - partial credit possible.)

- A. So that users can access their FileVault-protected home directories quickly.
- B. So that users can access a variety of services using the same account credentials.
- C. So that the admin user can manage user accounts centrally on the directory server, rather than individually on each client workstation.
- D. So that the admin user can implement Windows-style hashes for SMB/CIFS file sharing; hashes are supported for directory accounts, but not for local accounts.
- E. So that the admin user can use parental controls to manage users; parental controls restrictions can only be implemented on accounts stored on a directory server.

Answer: BC

15. Which statement presents a benefit of protected memory?

- A. Applications that crash automatically save open files.
- B. Data in memory used by running applications is encrypted.
- C. Applications that crash have the data in memory saved to a new file.
- D. Applications that crash do not adversely affect other running applications.

Answer: D

16. Which procedure can help you identify an application that will run with Rosetta?

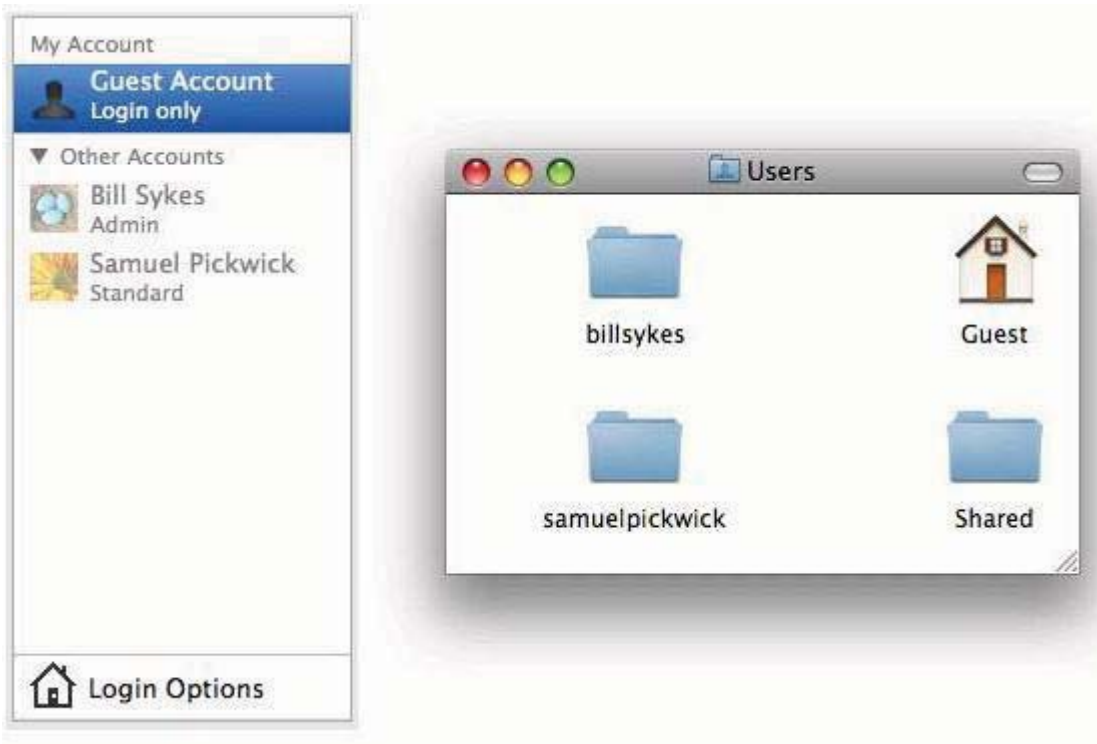
- A. Control-click the application icon, and choose Display Environment; if the Finder displays the Rosetta icon, the application will run with Rosetta.
- B. From the command line, run ls in the directory where the application resides; if the application type is X11, the application will run with Rosetta.
- C. Click the application icon, then choose Get Info from the Finders File menu; if the Kind field says, Application (PowerPC), the application will run with Rosetta.
- D. Click the application icon, then choose Get Info from the Finders File menu; if the Application

Environment field says, Rosetta, the application will run with Rosetta.

Answer: C

17. Review the screenshots of the My Account pane of Accounts preferences, and a Finder window, and then answer the question below.

You manage a Mac OS X v10.5 computer that has three local users configured as shown above. Bill Sykes has lost the password to his account. How can you reset the password?



- A. Log in as Bill Sykes using the root password, then reset Bill Sykes password from Accounts preferences.
- B. Log in as Samuel Pickwick, then open Reset Password from the Utilities folder, and reset Bill Sykes password.
- C. Restart the computer from the Mac OS X Install DVD, then open Reset Password from the Utilities menu, and reset Bill Sykes password.
- D. Log in as Samuel Pickwick, open Directory Access and enable the root user, then authenticate as the root user in Accounts preferences and reset Bill Sykes password.

Answer: C

18. Which TWO statements are true of file and folder permissions in the Finder in Mac OS X v10.5?(Choose TWO.)

- A. A user with Write only permissions to a folder can delete any file in that folder.
- B. A user with Write only permissions to a folder can rename any file in that folder.
- C. A user with Write only permissions to a folder cannot view any files in that folder.
- D. A user with Read only permissions to a folder cannot view any files in that folder.
- E. A user with Read only permissions to a folder cannot rename any files in that folder.

Answer: CE

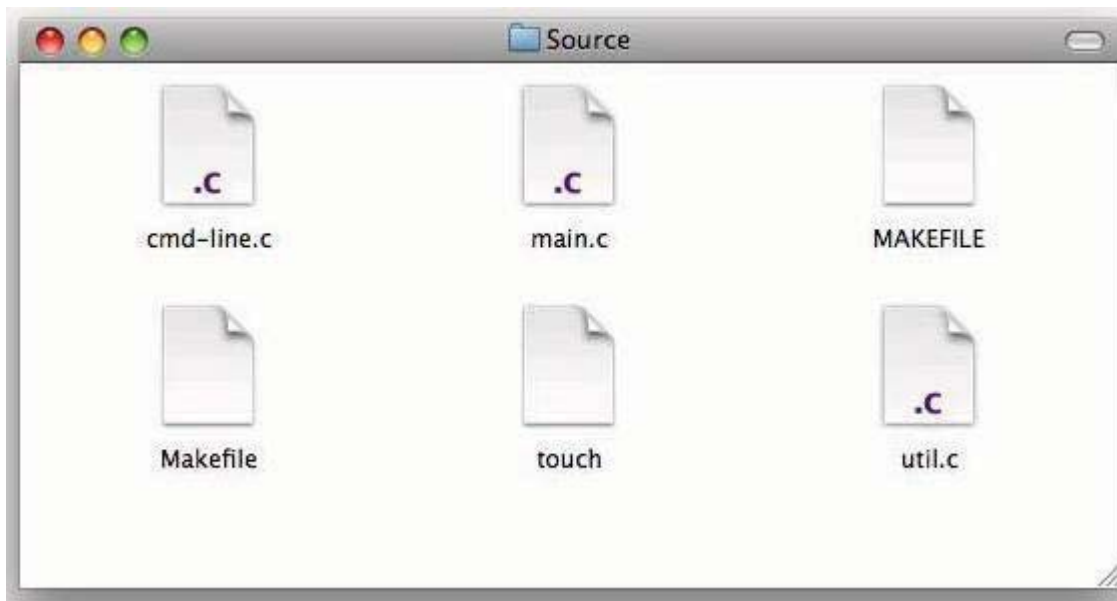
19. Migration Assistant is running on a Mac OS X v10.5 computer. It CANNOT migrate user files from _____.

- A. another volume on the same computer
- B. a Time Machine archive on the same computer
- C. another Macintosh connected in target disk mode to the computer where Migration Assistant is running
- D. an archive created by the Backup utility on a .Mac user's mounted iDisk

Answer: D

20. Review the screenshot of a Finder window, and then answer the question below.

One of your users needs to maintain the project files whose titles are shown in the screenshot above. If these files will be stored on the startup volume of a Mac OS X v10.5 computer, which format should you use for the volume?



- A. MS-DOS (FAT)
- B. Unix File System
- C. Mac OS Extended (Journaled)
- D. Mac OS Extended (Case-Sensitive, Journaled)

Answer: D

21. How do you start up a computer in target disk mode?

- A. Start up the computer from the Mac OS X Install DVD, then choose Target Disk Mode from the Utilities menu.
- B. Hold down the S key on the keyboard while the computer starts up, then enter the command, reboot Ctarget.
- C. Hold down the T key on the keyboard while the computer starts up, until a FireWire icon appears on the screen.
- D. Hold down the Option key on the keyboard while the computer starts up, until a dialog appears, then select Target Disk Mode from the dialog.

Answer: C

22. What Mac OS X v10.5 tool lets you enable system features that can help users with impaired vision?

- A. Speech Utility

- B. Accessibility Assistant
- C. Finders Vision preferences
- D. Universal Access preferences

Answer: D

23. Review the screenshot of the Network preferences pane, and then answer the question below.

What is the range of IP addresses in the local network for this Macintosh computer?



- A. 10.1.0.0 to 10.1.255.255
- B. 10.1.5.0 to 10.1.5.255
- C. 10.1.5.0 to 10.1.7.255
- D. 10.1.5.1 to 10.1.5.256

Answer: B

24. What THREE storage schemes can you choose for your hard disk(s) from the RAID Type pop-up menu in the version of Disk Utility that installs with Mac OS X v10.5?(Choose THREE - partial credit possible.)

- A. Striped RAID Set
- B. Mirrored RAID Set
- C. Adaptive RAID Set
- D. Concatenated Disk Set
- E. Striped with Parity RAID Set
- F. Mirrored with Parity RAID Set

Answer: ABD

25. Which of these is an attribute in a user record for a Mac OS X v10.5 user account?

- A. Access ID (AID)
- B. Security ID (SID)
- C. Service Profile ID (SPID)
- D. Universally Unique ID (UUID)
- E. Globally Generated ID (GGID)

Answer: D

26. An application has become unresponsive, and will not quit. Which of these procedures is NOT a method for forcing an application to quit?

- A. Open Activity Monitor, select the applications name from the list of processes, then click Quit Process.
- B. Press Command-Tab until the application is in the foreground, then press Command-Option-Q and select Force Quit.
- C. Choose Force Quit from the Apple menu, then select the applications name from the list of applications, and click Force Quit.
- D. Hold down both the Option key and the mouse button while hovering over the applications icon in the

Dock, and choose Force Quit from the shortcut menu.

Answer: B

27. How are application preferences typically stored in Mac OS X v10.5?

- A. In .DS_Store files, at the root level of the users home folder
- B. In a preferences database inside the Library folder in the users home folder
- C. In individual files inside the Library/Preferences folder in the users home folder
- D. In a preferences database inside the Library folder at the root level of the hard drive

Answer: C

28. You have both Preview and Adobe Reader installed on a Mac OS X v10.5 computer. Both applications can open PDFs. When you double-click a PDF file in the Finder, the file automatically opens in Preview. How can you set the file to open by default in Adobe Reader instead?

- A. Edit the users FileBindings.plist file so that Adobe Reader is the value for the key, PDF.
- B. Open Finder Preferences, select PDF under File Type, and choose Adobe Reader from the pop-up menu.
- C. Hold down the Option key while double-clicking the file icon, and choose Adobe Reader from the dialog.
- D. Select the file icon, choose Get Info from the Finders File menu, click the Open with disclosure triangle in the Info window, and choose Adobe Reader from the Open with pop-up menu.

Answer: D

29. You want to configure a Mac OS X v10.5 computer to authenticate users using account information stored on an Active Directory server. On the Mac OS X v10.5 computer, where do you enter the information it needs in order to bind to the Active Directory server?

- A. In the Open Directory plug-in of Directory Utility
- B. In the Active Directory plug-in of Directory Utility
- C. In the Open Directory pane of Network preferences
- D. In the Active Directory pane of System Preferences

Answer: B

30. Which statement is true of Kerberos?

- A. Kerberos requires LDAP.
- B. Kerberos supports single sign-on.
- C. Kerberos requires service discovery.
- D. Kerberos sends your user name and password to each server you access.

Answer: B

ExamSavior.com was founded in 2006. The safer,easier way to help you pass any IT Certification exams . We provide high quality IT Certification exams practice questions and answers(Q&A). Especially [Adobe](#), [Apple](#), [Citrix](#), [Comptia](#), [EMC](#), [HP](#), [HuaWei](#), [LPI](#), [Nortel](#), [Oracle](#), [SUN](#), [Vmware](#) and so on. And help you pass any IT Certification exams at the first try.

You can reach us at any of the email addresses listed below.

English Customer:

Sales : sales@examsavior.com

Support: support@examsavior.com

Website: www.examavior.com

